



Challenging ambitions



-essent 

A dialogue with society

The year 2010 was the first full year that Essent operated as a subsidiary of RWE. Our earlier expectations of this cooperation manifested themselves: Essent is benefiting from RWE's procurement capacity and robust financial position. RWE benefits from Essent's innovative capability in areas such as biomass co-firing and project management, as well as from its societal relationships with environmental organisations, scientists and government authorities. In 2010, Essent addressed various interrelated energy issues that are still current today.

Energy policy

Our society is currently in a transitional phase, moving toward more renewable and low-carbon energy supplies. Essent is facing up to its responsibility for this energy transition. Together with sixty other major European energy companies, our target is to ensure that by 2050 energy supply will be carbon-neutral. We also subscribe to the Dutch Cabinet's climate and energy goals. As such, achieving significant energy savings is an important factor for us, and we are making considerable efforts to make our energy production greener.

At present, the production of renewable energy is subsidised under the improved incentive scheme *Stimuleringsregeling Duurzame Energie*

Plus ('SDE+'). Essent supports the idea behind SDE+, which is based on the principle of competition between different technologies in order to maximise the efficiency of renewable energy production. However, we do not believe that this will be sufficient to achieve the Cabinet's goal that by 2020 renewable energy should represent a share of 14 percent.

That is why Essent advocates a hybrid supplier obligation for renewable energy, i.e. a 'mandatory renewables percentage' for all businesses supplying energy in the Netherlands. This will allow the erratic, unstable and therefore unreliable subsidy system for renewable energy to be replaced by a stable, reliable and market-oriented obligation. This will create long-term certainty for energy companies in terms of sustainable investments, sustainable technology will become profitable sooner and market operators can choose the technology that best suits their needs. Subsidies will only be needed on a short-term basis for the most expensive technologies or true innovations, until such a time as they also become sufficiently profitable.

Eemshaven power station

In 2010, the power station in the port of Eemshaven in the Dutch province of Groningen, while still under construction, became the



subject of public and political debate. We are very much aware that the construction of this coal/biomass-fired power station is a sensitive issue. Nevertheless, we are convinced that the Eemshaven power station is necessary to ensure a reliable, affordable and renewable supply of energy in the future.

Increasing the amount of renewable energy in the Netherlands is not enough, no matter how much we would like it to be. Even if the Netherlands managed to realise a spectacular increase in the proportion of renewable energy and to achieve the Cabinet's goal of 14 percent by 2020, 86 percent of our energy would still be generated using conventional means in 2020. Naturally, this should be done as efficiently as possible. We must also ensure that we do not become dependent on a single source of energy: that would give rise to geopolitical risks and would affect the affordability of our energy supplies.

The Eemshaven power station will be the cleanest and most efficient of its kind. Moreover, upon completion the power station will offer the option of fitting a carbon capturing system and co-firing a considerable percentage of biomass. In this fashion, the Eemshaven power station will help to modernise our Dutch installed capacity. In due course, older, less efficient and

consequently less clean power stations will be disconnected from the electricity network as a result of this modernisation. This will benefit the climate and the environment, as it will considerably reduce the average carbon emission per kilowatt hour.

Coal dialogue

In 2010, questions were asked in the Lower House of Parliament that led to industry organisation *Energie-Nederland* initiating a dialogue about the origins of coal. This dialogue was chaired by Frank Heemskerck, former State Secretary of Economic Affairs. The purpose of the dialogue is to improve local human rights and environmental conditions at mines supplying coal to Dutch end-users. As an energy company operating in the Netherlands, we wish to face up to our responsibilities and we are prepared to talk to those parties willing to conduct a debate based on facts.

It is important to note that the procurement of coal by Essent and RWE is compliant with RWE's Code of Conduct, which is based on the principles of the UN Global Compact.

Workforce

Our employees are of great value to Essent. It is an ongoing challenge to find and retain good

people, for the present and for the coming years. It is important that the workforce reflects society and that our employees can identify with and be proud of the company. Surveys show that we are heading in the right direction, thanks in part to the new, flexible working methods that we have introduced.

In terms of Health, Safety & Environment (HSE), Essent is one of the leading European electricity companies. Sadly, however, an employee of a subcontractor died in an accident at a project in Germany. That accident shows that the focus on HSE may never waver. Fatal accidents at work are unacceptable.

CR Council

Essent continues to improve its CR policy, step by step. In 2010, to ensure that we remain focused, we took the initiative of setting up a CR Council, a group charged with advising the Executive Board and made up of experts from various societal disciplines. The CR Council will be installed in 2011, and will be responsible for presenting advice, initiating discussions and identifying trends.

In 2010, we entered into a dialogue with very diverse groups in society, with customers, with the government, with suppliers and with our employees. We are determined to continue that dialogue enthusiastically in 2011, since Essent's position as an energy company places the company at the heart of society. We not only wish to communicate our views, we also wish to hear what society thinks about us and how we can learn from others.

's-Hertogenbosch, 5 May 2011

*Peter Terium
CEO of Essent N.V.*

Our ambition:
for Essent
to be the best-
performing
energy
company

Profile of Essent

Essent N.V.

Essent N.V. is an energy company that supplies gas, electricity, heat and energy services to consumers and businesses in the Netherlands and Belgium and that produces a large part of that energy itself. Essent has a production capacity of 3,769 MW, of which 532 MW is used for producing renewable energy. We are one of the three largest Dutch electricity producers, and we are the largest producer of renewable energy in the Netherlands.

Essent has around 2.3 million electricity customers, of whom around 1 million Groene Stroom (Green Electricity), Groen Zakelijk (Green Commercial) and Windkracht 220 (Windforce 220) customers, and 1.9 million gas customers. We supply consumers as well as small and large businesses.

Besides supplying electricity, gas and heat, Essent's activities also include finding local energy solutions, providing inspection services and advising on energy saving.

Essent has a workforce of around 5,800. Its head office is located in 's-Hertogenbosch. Essent has an annual turnover of more than 6,000 million euros (2010). In 2009, Essent became part of German listed energy company RWE AG.

Organisation

Essent is organised around the Executive Board's various areas of focus, as shown in the organisation chart below.

Organisation chart Essent n.v.

Executive Board

Staff services	Commercial cluster	Technology cluster
HR	Marketing	Business Development
IT	Sales portfolio management	Projects ¹
Essent Service	Business-to-business	Production
Others	Business-to-consumer	New Energy
	SME	
	Essent Local Energy Solutions	
	Essent Belgium	

¹ — Integrated in RWE Technology as of 1 January 2011.

Executive Board

Essent is managed by the Executive Board. Its duties include defining Essent's goals and strategy. The Board is also responsible for setting and monitoring general policies in the areas of financial affairs, commercial affairs, human resources, legal affairs, communications, investments, technology and the environment. In addition, the Board is responsible for the way in which financial resources are deployed and for communications with stakeholders. Essent's Executive Board reports directly to the Executive Board of RWE, and is accountable to Essent's Supervisory Board.

Mission

Essent operates in an environment that has undergone stark changes in recent years, and that will never cease to change. Customers are critical, and place high demands on the company and on Essent's products and services. Climate change is an area of increased focus, the energy market is becoming more and more European, competition has increased and the technological developments are moving at a rapid pace. All these changes present major challenges for Essent: challenges that we are happy to face and for which we define demanding targets. Essent's ambition is: for Essent to be the best-performing energy company. Its mission: for Essent to lead the way, through our energy.

Goals

To become the best-performing energy company, Essent has set itself four ambitious targets in terms of customers, technology, sustainability and organisation. Those targets, and the related CR spearheads, are detailed in the CR dashboard.

Core values

Essent has four core values on which all its decisions are based. It is about delivering: Essent de-

livers on its promises. It is about inventiveness, meaning that Essent combines its know-how in smart and creative ways and that simple and efficient solutions are achieved through cooperation. Essent is transparent: customers, employees and other stakeholders will not be faced with surprises. Empathy stands for the sincere interest that Essent's employees display in customers, their surroundings and each other.

Value chains

RWE procures fuels on the global market, such as coal, gas and biomass, which Essent uses in its power stations to produce electricity and heat or to sell gas. Essent is aware of the issues surrounding supply chain responsibility and of the impact that its actions have on people and the environment. Essent's affiliation with the UN Global Compact and its compliance with that organisation's guidelines serve to ensure that Essent's accounting for the origins of the fuels it uses is transparent.

Through its investments and based on the targets defined in the CR dashboard, Essent strives to lower its emissions and increase its production of renewable energy. By offering renewable alternatives to fossil-based energy and by providing advisory services, Essent helps to lower emissions and reduce its customers' levels of energy consumption.

About RWE

Since 30 September 2009 Essent has been wholly owned by RWE, one of the five largest energy companies in Europe. RWE's activities comprise generating, selling, transporting and supplying electricity and gas. Some key figures: Over 70,000 employees. Electricity: 16.2 million customers Gas: 7.9 million customers. Turnover in 2010: 53 billion euros.

RWE is the largest producer of energy in Germany, the second largest in the Netherlands and



Same quantity of gas,
fifty percent more electricity

New Claus C power station in Maasbracht under construction.

the third largest in the United Kingdom. RWE also has operations in Central and Southeastern Europe.

The principal basis for the RWE group's future growth lies in its power stations and the investment programme for developing new environmentally-friendly and flexible generating capacity. Renewable energy continues to an important focal area for RWE's current and future investments.

RWE's leading position in the European energy trade allows it to make optimum use of its power stations. The group develops new products for households and businesses to meet its customers' changing needs. Climate protection and efficient ways of dealing with energy are becoming increasingly important factors. RWE's goal is to

create lasting value for its investors, customers and employees. As such, its strategy is aimed at organic growth, supported by acquisitions that increase the company's value.



Corporate Responsibility

Strategy and Policy

Corporate Responsibility (CR) is an integral part of Essent's business. It plays an important part in the way management and employees think and act. This section discusses Essent's CR structure, the role of the CR Council and Essent's CR spearheads and goals.

CR structure

Essent's Executive Board is responsible for the company's CR policy. CR is one of the focus areas in the portfolio of CEO Peter Terium, who acts as the principal for Essent's CR department on behalf of the Executive Board. CR Director Marga Edens manages that department, and in that capacity she is responsible for shaping, controlling and implementing our company's CR policy. The CR policy and the reports on that policy are based on the principles of the UN Global Compact and the Global Reporting Initiative (GRI).

The CR Director reports directly to the CEO, who in turn is accountable to the Supervisory Board and to RWE for Essent's CR policy.

CR Council

In its CR Report for 2009, Essent expressed its ambition to set up a CR advisory council. We used 2010 to define a clear role and terms of reference for that CR Council, to draw up its rules of

procedure and to find people to make up the CR Council.

The members of the CR Council will advise the Executive Board and the CR Director, put forward ideas, identify problem areas and express their views on Essent's CR aspirations and dilemmas. The CR Council is both a sounding board and an independent adviser.

Essent is based solidly in society, and it is logical that the societal aspects that are important to Essent - nature and the environment, politics, customers, science and the business sector - are all represented by independent experts on the CR Council. The formation of the CR Council will serve to reinforce Essent's CR policy, in part through the permanent dialogue between that Council, the Executive Board and the CR Director. Essent's CR Council will meet for the first time during 2011.

The members

The members of the CR Council have been announced. They are on the Council in a personal capacity, not as representatives of the organisations for which they work. The CR Council is chaired by Willem Ferwerda, who represents nature and the environment. Ferwerda is the Managing Director of the Dutch branch of IUCN, the International Union for Conservation of Nature.

Wim Turkenburg is the head of the Science, Technology and Society section of the Department of Chemistry of the Faculty of Science at Utrecht University, as well as being Managing Director of the Copernicus Institute at the same University. He represents science on the CR Council.

Representing business customers on the CR Council is Leendert-Jan Visser, who is the director of MKB-Nederland, the organisation for the SME sector in the Netherlands. Former State Secretary of Transport, Public Works and Water Management and former Minister of Housing, Spatial Planning and the Environment Tineke Huizinga represents the political angle.

Manon van Beek, representing the business sector, is an executive partner at Accenture (a globally operating consultancy firm), where she is responsible for the Benelux utilities sector.

RWE Code of Conduct

The basis for Essent's CR policy was reinforced in 2010. In 2010 the guiding principles of the RWE Code of Conduct, which are based on the UN Global Compact, were also included in Essent CR policy and 'translated' for use within Essent by means of '10 Essential principles'. The Essent CR Policy and Code of Conduct reflects our principles, our assumptions and our values: trustworthy, future-oriented, reliable, performance-based and customer-focused.

The importance of the Code of Conduct is clearly visible in issues concerning essential matters, for example the origins of coal. Essent imposes an obligation on its business relations to abide by the Code, and monitors their compliance.

Internally, Essent ensures that all employees have equal opportunities and that they treat one another with respect. Employees and job applicants may not be treated unfavourably because of their gender, marital status, race, nationality, age, religion or sexual orientation.

Dashboard

As an energy company with a solid foundation in the society in which we operate, we centre our CR policy around nine spearheads that have visible interfaces with that same society and that tie in closely with RWE's principles. The spearheads are emission reduction, the renewable energy share in the energy mix, energy savings, innovation, Health, Safety & Environment (HSE), sound employership, customer satisfaction, human rights and corporate citizenship.

In 2010, for the first time we defined key performance indicators for these spearheads and linked them to specific targets. See also the CR dashboard in this summary of the 2010 CR Report. This dashboard ensures that Essent's CR targets are clear, measurable and manageable.

CR DASHBOARD

CR SPEARHEADS

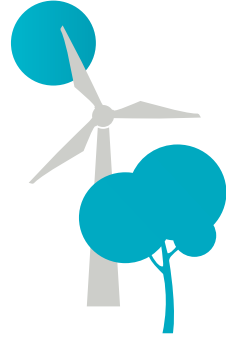
EMISSION REDUCTION

A carbon neutral power supply by 2050.



RENEWABLE ENERGY SHARE

Double our share of renewable energy production by 2020.



ENERGY SAVINGS

Stimulate energy savings.



INNOVATION

In search for efficient and sustainable energy solutions.



HEALTH, SAFETY & ENVIRONMENT

Offering a healthy and safe working environment.



SOUND EMPLOYERSHIP

Essent is a renowned employer with special care for diversity.



CUSTOMER SATISFACTION

Living up to our promises: as available, affordable and sustainable as possible.



HUMAN RIGHTS

Respecting human rights in global commodity and fuel chains.



CORPORATE CITIZENSHIP

Supporting social projects, good causes and voluntary work.



STATUS 2010

Average 2010 CO₂ emissions were 568 g/kWh.

568 g/kWh

In 2010 12.1% of our total energy production was renewable. 92% of the imported wood pellets was certified according to Green Gold Label.

12.1%
of total energy production
92%
Green Gold Label

73 kton CO₂ reduction realised by our customers since 2008; average CO₂ emission of our fleet and buildings: 4,808 kg/FTE.

73 kton
4,808 kg/FTE

No goal defined for 2010.

—

The 2010 LTIF was 0.48 and the TRCF was 3.04. The illness rate was 3.5%.

0.48 LTIF
3.04 TRCF
3.5% illness rate

Essent was 15th in top 25 Beste *Werkgevers Onderzoek Intermediar* survey. 19% women in (sub)top management positions.

15th position
19%
women in (sub) top management positions

The 2010 percentage dissatisfied customers is 5%.

5%

We apply the UN Global Compact principles to our partners and our self.

—

No goal defined for 2010.

—

TARGET

Lowering average CO₂ emissions to less than 500 g/kWh in 2012 and to less than 400 g/kWh in 2020.

<500 g/kWh in 2012
<400 g/kWh in 2020

Share of renewable energy production 20-25% by 2020; 90% of imported wood pellets certified according to Green Gold Label in 2012

20-25%
OF TOTAL PRODUCTION 2020
90%
2012 GREEN GOLD LABEL

A total of 161 kton CO₂ reduction to be realised by our customers in 2012; 5% annual CO₂ reduction per FTE 2011-2013.

A TOTAL OF
161 kton
IN 2012
5%
/FTE PER YEAR
2011-2013

Initiation of 4 pilot projects between 2011 - 2012.

4
PILOT PROJECTS
2011-2012

2011 LTIF target 1.54, TRCF 3.87 and illness rate 3.7%.

1.54 LTIF
3.87 TRCF
3.7%
Illness rate
in 2011

Permanent top 25 ranking in Beste *Werkgevers Onderzoek Intermediar* survey. 25% women in (sub)top management positions in 2013.

top 25
25%
women in (sub)top management positions
in 2013

The 2011 percentage dissatisfied customers is less than 6%.

≤ 6%
in 2011

Full compliancy with RWE Code of Conduct.

100%
COMPLIANCE
WITH RWE
CODE OF
CONDUCT

In 2011 5% of our employees volunteers in the Companius programme; 1 project contributing to UN Global Compact is initiated.

5%
of our employees in
2011
1
project in 2011

A good combination with wind farms on land and sea



The Eemshaven power station under construction

Sustainability and security of supply go hand in hand

Essent is based solidly in society. As a producer and supplier of energy, our business brings us into contact with every facet of society. On the one hand our actions have a negative impact, for example through carbon emissions, while on the other our contribution is positive, for example because we produce more renewable energy and reduce our emissions. We have responsibilities and obligations, for example as set out in the Sustainability Contract that RWE has concluded with Essent. Those obligations concern sustainability, affordability and security of supply. It is not without reason that in 2010 Essent explicitly worked on the themes that have a direct bearing on those obligations: coal, biomass and the Eemshaven power station in the Dutch province of Groningen.

Cleaner and more efficient

These themes are closely linked, and literally come together at the Eemshaven power station: a modern, highly efficient coal-fired power station that will be using the most recent and proven technologies. When completed, the power station will be ready to co-fire 10 percent biomass, and can be equipped with a carbon capturing system with an annual capacity of a million tonnes of CO₂. The Eemshaven power station will fire coal using

Ultra Super Critical coal-fired boilers, which not only provide high yields and low emissions, but are also eminently suitable for load following. This means that we can increase or decrease the power station's output much faster than that of traditional coal-fired power stations, and if necessary can shut it down. This is an important factor in the transitional phase on the road to completely renewable electricity generation, since electricity is needed even when the sun is not shining and the wind is not blowing. Security of supply is just as important as sustainability. In this fashion, the Eemshaven power station forms a perfect and essential combination with off-shore and on-shore wind farms. In addition, when the Eemshaven power station becomes operational, old (and therefore less clean) power stations elsewhere in Europe will be forced to shut down ahead of schedule, since they will be unable to compete with this power station, which will produce much more electricity with the same volume of coal. With the help of the Eemshaven power station Essent can become one of Europe's leading electricity generators. It is Essent's intention to co-fire biomass on a large scale at the Eemshaven power station as well: without biomass, we are convinced, it will be impossible to achieve the national sustainability ambitions.

That is why we are investing in a Biobased Economy (BBE): an economy in which fossil fuels and raw materials are replaced by green raw materials, or biomass. It is a prerequisite, however, that the government recognises and encourages the possibilities presented by biomass. The construction of a coal-fired power station also reflects our decision to diversify our installed capacity. Choosing for gas-fired power stations or wind farms alone would expose us to risks. How could we guarantee security of supply and affordability if we run out of gas or if the wind is not blowing hard enough? The Eemshaven power station is an ideal combination with wind farms: its fast start-up qualities mean that it can be put into operation immediately during periods of less wind.

Listening

The use of coal in power stations is not without controversy. Environmental organisations in particular oppose the construction of new coal-fired power stations in the Netherlands. First and foremost, their arguments concern the emission of CO₂ and other pollutants. In addition, they put forward social and ecological wrongs in coal mining as reasons to object to coal-fired power stations.

Essent is putting forth every effort to guarantee responsibility with regard to the origins of the coal it uses. The coal used in our power stations is procured by RWE Supply & Trading. Like Essent, RWE is affiliated with the UN Global Compact. All commercial relations and business operations of RWE Supply & Trading are governed by the RWE Code of Conduct, which is based primarily on the principles of the UN Global Compact.

In August 2010, in part because of the publicity surrounding the issue of coal origins and questions about that issue in the Lower House of Parliament, the Dutch Coal Dialogue about

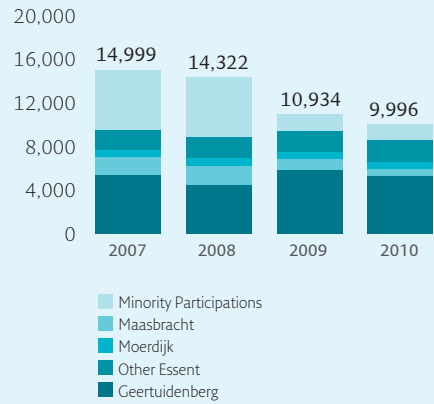
the origins of coal was initiated. This dialogue is an initiative of the various energy companies and is facilitated by industry organisation Energie-Nederland. Participants include Dutch energy companies that operate coal-fired power stations, such as Essent, major coal consumers such as Tata Steel (formerly Corus), trade unions, mining companies and NGOs.

Dialogue

Essent does not automatically assume that everyone will support our choices. We are open to debate about every choice we make. Indeed, we encourage dialogue, via special websites, by organising Essential Conferences, by entering into covenants, by contributing to the stakeholder dialogue about the origins of coal, by participating in a Lower House hearing, by conducting face-to-face meetings, by writing letters, by visiting political cafes and also by setting up a CR Council. We do not do all this simply to communicate Essent's views and explain our choices, but also to listen to other voices in society. What are their views on various issues, what are their solutions to the issues we are facing? And what can we learn from them?

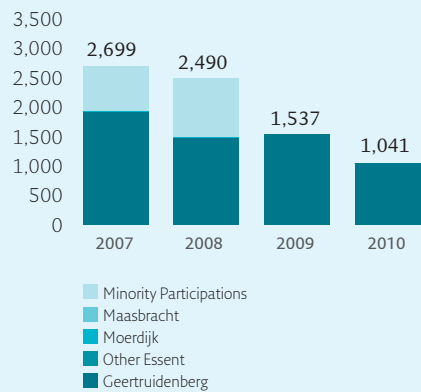
KEY FIGURES

CO₂-emissions energy production¹ (ktonne)

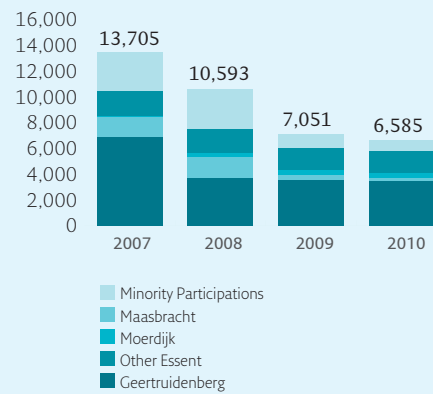


1 — CO₂-emissions minority participations were 1,444 ktonnes in 2010.

SO₂-emissions energy production (tonne)

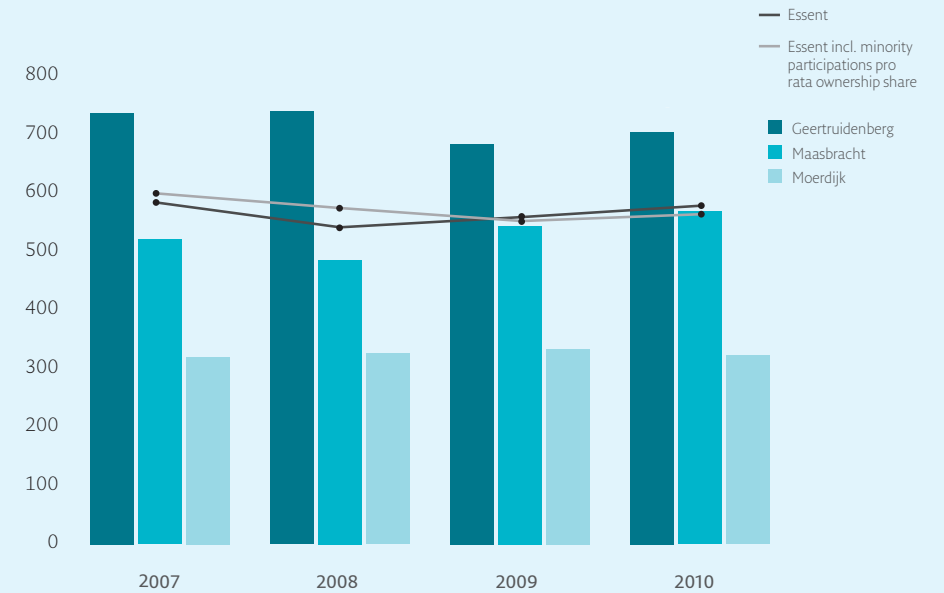


NO_x-emissions energy production (tonne)



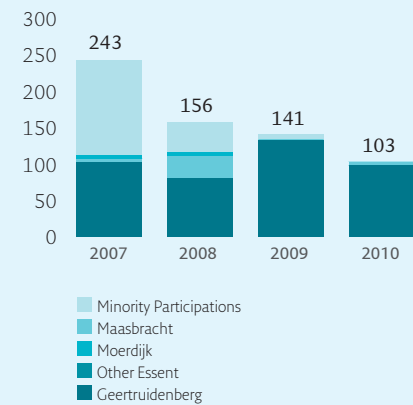
See www.essent.nl/cr for more information about emissions and an explanation per graph.

CO₂-emissions energy production¹ (g/kWh)



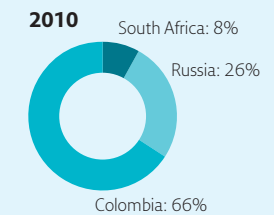
1 — In 2010 including RWE Innogy Benelux (formerly Essent Wind Nederland).

Dust emissions (PM₁₀) energy production (tonne)



Origins and consumption of coal

In percentage



Total coal consumption in the Amer power station, generating electricity for Essent customers, was 2.18 million tonnes in 2010.

Generation of renewable electricity¹

in GWh

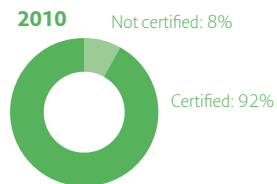
	2010	2009	2008	2007
Wind energy	367 ³	1,067 ²	843	755
Hydropower	31	26	30	34
Solar energy	—	—	—	0,01
Landfill gas and biogas	0	0	42	48
Stand alone clean biomass	85	153	164	158
Fossil fuels replaced by clean biomass	1,646	1,669	1,512	1,135
Of which				
Solid biomass	1,646	1,669	1,149	1,069
Liquid biomass	0	0	363	66
Other biomass (incl. waste incineration)	0	0	465	386
Total	2,129	2,915	3,055	2,519
Long term windenergy power purchase contracts	262 ⁴	—	—	—

1 — Due to changes in principles underlying the organisation and reporting caused by the takeover by RWE, the figures for 2009 and 2010 are not directly comparable with those of previous years.

2 — Of which 606 GWh in Germany.
3 — RWE Innogy Germany excluded.
4 — Reported for the first time for 2010.

Wood pellets with Green Gold Label (GGL)

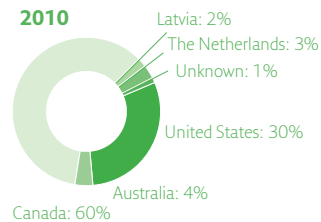
In percentage



Imported wood pellets

Wood pellet consumption and origin

In percentage



Total biomass consumption in the Amer power station, generating electricity for Essent customers, was 1.03 million tonnes in 2010. Over 75% of this was (imported) wood pellets.

People, Planet, Profit, Power¹

	2010	2009	2008	2007
People				
Number of employees ²	5,872	5,480	10,324	10,223
% women	34	35	25	27
% women in management positions	19	16	17	14
% absence due to illness	3.5 ³	3.7	3.9	4.3
LTIF (DART rate) ⁴	0.48	(0.40)	(0.82)	(0.97)
Planet				
Donations (approximate amount, in euros)	130,000	300,000	380,000	300,000
Profit⁵ (amounts in millions of euros)				
Turnover	6,120	5,710	9,038	7,378
Profit attributable to equity holders	762	4,391	887	2,594
Total equity	6,847	6,274	5,253	5,175
Total interest-bearing liabilities	24	109	1,186	724
Capital employed	7,572	7,387	7,830	8,204
Power				
Total renewable generating capacity (MW)	532 ⁶	1,076	1,098	1,042
Renewable electricity as % of total power generation	12.1	14.8	12.1	10.0
Number of customers purchasing green electricity + Windkracht 220 + Groen Zakelijk in the Netherlands	1,000,000 ⁷	920,000	916,000	927,000
Number of Groen voor Gas customers	32,500	34,800	35,000	25,000
CO ₂ -emissions (ktonne) ⁸	9,996	10,934	14,322	14,625
% solid biomass with Green Gold Label	92 ⁹	73	68	48

1 — Due to changes in principles underlying the organisation and reporting caused by the takeover by RWE, the figures for 2009 and 2010 are not directly comparable with those of previous years.
2 — Own employees and employees of contracted third parties.
3 — Essent excluding Energie:Direct, Essent Belgium, ELES-extended en Essent Productie Geleen (EPG)

4 — Profit figures taken from the financial reporting of Essent N.V.
5 — Profit figures taken from the 2010 consolidated financial statements of Essent N.V.
6 — Wind activities of RWE Innogy Benelux are included.
7 — RWE Netherlands customers included.
8 — Emissions from the generation of electricity and heat.

9 — Refers to imported wood pellets only.

Publication details

Essent N.V.
Willemsplein 4
5211 AK 's-Hertogenbosch
P.O. Box 689
5201 AR 's-Hertogenbosch

Telephone: 088 8511000
www.essent.nl

Translation
Ernst & Young Language and
Translation Services

Report texts
Het Fabulaat
Godfried van der Heijden

**Concept, design and
image editing**
Mattmo, Amsterdam
www.mattmo.nl

Photographs
Hollandse hoogte (cover)
Bart Willemsen (page 2)
Essent N.V (page 7, 8 & 9)
Hollandse hoogte (page 15 &16)

Publication date
5 May 2011

This is an English summary of the
Essent CR Report 2010, which publis-
hed in Dutch. The CR Report 2010 is
made available at the Essent website,
www.essent.nl. In the event of any
discrepancies, the Dutch CR Report
2010 published on www.essent.nl
will take precedence.



-essent 